

MMR-EMG-FL O-N01

### Myanmar Flood Response – August 2015

**Budget:** \$31,000 Received in Donations

**Update:**

We sent just over \$10,000 each to three of our implementing partners who work in the areas most affected by the August 2015 flooding in Myanmar. Each of our partners was able to immediately use the funds.

One of our partners reported that they were second in to their villages, behind the government, who were not able to provide emergency relief. Another partner reported that they were the only people who were able to get in to their locations, in the remote areas of the Chin state!

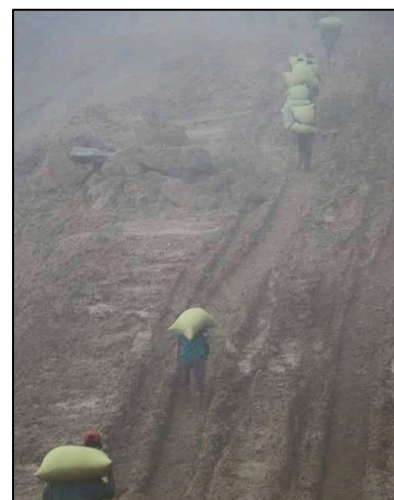
Two of our partners were key in coordinating with other local organisations and churches to further their reach and maximise the resources available. One partner reported that they were able to help people who were denied access to emergency housing and who had nothing, not even anything to eat. These people were all so appreciative of the assistance provided.

Our three partners were able to use our funds in 16 villages. The funds were used to purchase emergency rations, including 410 bags of rice, oil, sanitation materials, clothes, medicine, instant noodles and blankets. One of our partners helped repair water pipes and re-dig wells, to provide essential clean water. In other villages they worked to repair houses, including re-roofing them.

One of our partners was able to provide counselling to those most impacted by the floods; as you can imagine the psychological as well as the physical impact has been huge.

**Almost 3000 people were assisted.** Two of our partners are now focussed on reconstruction.

All 3 of our partners were able to respond immediately, and were able to target the most needy, and those in areas where the least assistance was



getting through. The reports from our partners were that people were extremely touched and thankful for the assistance.



The latest World Disaster Report highlights the important role of strong local actors in disasters, stating that they often save more lives than international actors. Our partners are strong proof of this, and we are so pleased we were able to send funds to make this possible. Thank you so much for your donations – without you, 3000 people will not have had food, clean clothes or blankets. Now they not only have all of this, but know that they are not alone in their suffering.



Note, all pictures are from our partners, and aim to show the people helped, the difficulties involved in reaching the impacted communities and the size of the disaster. From top to bottom the images show: 1) An old woman with nothing, assisted by our partner, 2) one of our partners stuck on the difficult road in – the entire wheel was damaged, 3) walking supplies up a hill impacted by a mud-slide – the only way in, in the rain! 4) Using a motorbike to get supplies in somewhere else – still not the easiest job, 5) taking emergency supplies in by river, 6) distribution of rice and other emergency rations, 7) one of the flooded rivers

